

Financial Data Book

投資家の方のための
財務データ集

for Investors

2011年12月発行(December 2011)

2011

三井金属鉱業株式会社
MITSUI MINING & SMELTING CO., LTD.

CODE : 5706

注 Notes

1. 本冊子記載の財務数値は日本の会計基準に基づいて作成された各決算期の監査済み有価証券報告書および英文アニュアルレポート等に基づいております。
なお、本冊子自体は監査法人等の監査を受けておりません。

Not audited but based on audited financial statements prepared in accordance with accounting principles that were generally accepted in Japan when original statements were prepared.

2. 該当する数値が原資料に記載されていない場合は N/A と表示しております。
N/A means that an appropriate figure was not available in original statements.
3. 単位未満の金額は原則として切り捨てで表示してあります。
Amounts less than a unit are principally rounded down.

世界有数の非鉄金属メーカーとして技術力を蓄積してきた三井金属は、いまや亜鉛のトップメーカーであるにとどまらず、その「マテリアルの知恵」を電子材料・自動車用機能部品・資源リサイクル等の様々な分野で開花させています。

特に電子材料分野の成長は著しく、プリント配線板用電解銅箔をはじめとする当社製品がパソコンや薄型テレビ・携帯電話など最新電子機器の性能向上に大きな役割を果たしています。

Mitsui Kinzoku is now one of the key suppliers of nonferrous metal derivatives which play a key role in high-tech industries. Its *electronics-related materials*, including copper foil (for printed wiring boards) are indispensable for PCs, flat-panel TVs, mobile phones, and other cutting-edge electronics devices.

Since its establishment in 1950, Mitsui Kinzoku has been a leading supplier of such *nonferrous metals* as zinc and copper, and has been one of the world's largest zinc producers. To take full advantage of its expertise in material processing, Mitsui Kinzoku has diversified its profit sources to include *automotive parts production* and *recycling & environmental businesses*.

目次 Contents

	page	
事業内容	2	Business Areas
最近10年間の動き(連結)	4	Ten-year Review (Consolidated)
要約財務情報(連結)	6	Financial Summary (Consolidated)
連結貸借対照表	8	Consolidated Balance Sheets
連結損益計算書	10	Consolidated Statements of Income
連結キャッシュフロー計算書	12	Consolidated Statements of Cash Flows
事業別セグメント情報	14	Business Segment Information
設立以来の業績推移	16	Performance since Establishment
経営体制	17	Directors, Auditors and Executive Officers
主要事業所・関係会社	18	Major Plants and Offices
会社と株式の情報	20	Corporate Data and Shareholders

事業内容 Business Areas

事業区分 <i>Business segment</i>	主要製品・サービス	(用途例)
銅箔 <i>Copper Foil</i>		電解銅箔 (電子機器用プリント配線板)
機能材料 <i>Engineered Materials</i>		電池材料 (乾電池、ハイブリッド車向け電池) 金属機能粉 (電子部品、複写機トナー) 薄膜材料 (液晶画面、磁気記憶装置) レアメタル化合物 (電子部品、ガラス研磨、レンズ) 触媒 (排ガス浄化装置) 単結晶 (検出器、レンズ) 希土類
金属・環境 <i>Metals, Minerals and Environmental Engineering</i>		亜鉛・亜鉛合金 (メッキ鋼板、ダイカスト) 銅 (電線、伸銅品) 金・銀 (電子工業材料、感光材料) 地熱蒸気 (発電) 鉛 (蓄電池、無機薬品) 酸化亜鉛・酸化鉛 (ガラス・ゴム等の添加物) パーライト (乾式濾過、土壌改良) 産業廃棄物処理 人工軽量骨材 (軽量コンクリート) パーライト (建築材料、湿式濾過)
自動車機器 <i>Automotive Parts and Components</i>		自動車用機能部品 (ドアロック、ドア電動開閉装置)
その他 <i>Other</i>		セラミックス製品 (炉材、溶融金属濾過) ダイカスト製品 (自動車、産業機器、家電製品) 伸銅品・亜鉛板 (電気部品、電極材、屋根材) 研削砥石 (機械研削) 非鉄金属・電子材料等の販売 TAB・COFテープ (液晶駆動用IC等の連続実装) 計測機器 (各種設備の設計・施工) エンジニアリング 情報処理システム

Major products and services

(Applications)

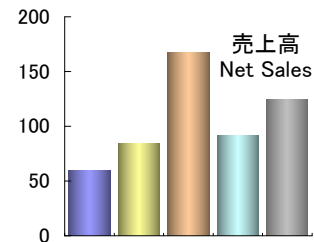
Electrodeposited copper foil (printed wiring boards)

2011年3月期実績

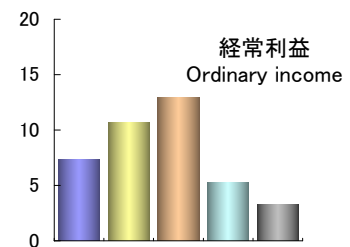
Results for fiscal year ended March 2011

(十億円 billion yen)

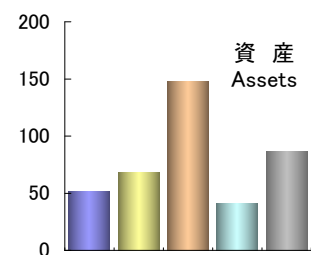
Battery materials (dry batteries, hybrid powered vehicles)
 Engineered metal powders (electronics, toner for copiers)
 Sputtering targets (flat panel displays, magnetic data storage)
 Rare metal compounds (electronics, glass polishing, optical lenses)
 Catalysts (exhaust gas detoxifiers)
 Single crystals (scintillators, optical lenses)
 Rare earths



Zinc metal & alloy (galvanized steel, die-casting)
 Copper metal (electric wire, rolled copper and brass)
 Gold & silver (electronics, photosensitives)
 Geothermal steam (power generation)

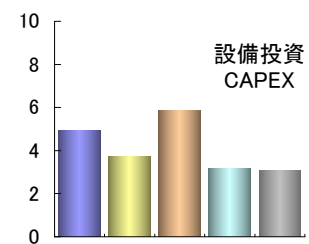


Lead metal (car batteries, inorganic chemicals)
 Zinc & lead oxide (glass, rubber)
 Perlite (air filtration, soil improvement)
 Industrial waste treatment
 Artificial light-weight aggregate (light-weight concrete)



Perlite (construction, liquid filtration)

Automotive components (door latches, power slide door systems)



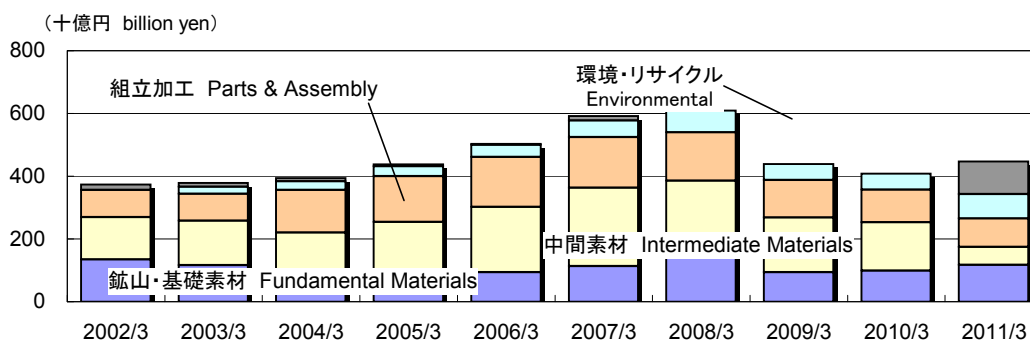
Specialty ceramics (furnace refractory, melted metal filtration)
 Die-casting products (automobiles, machines, home electronics)
 Rolled copper & zinc (electric parts, electrodes, roofs of buildings)
 Grinding wheels (mechanical grinding)
 Trading

TAB & COF tapes (tape automated bonding of LCD driver ICs)
 Instrumentation systems
 Engineering
 Information system

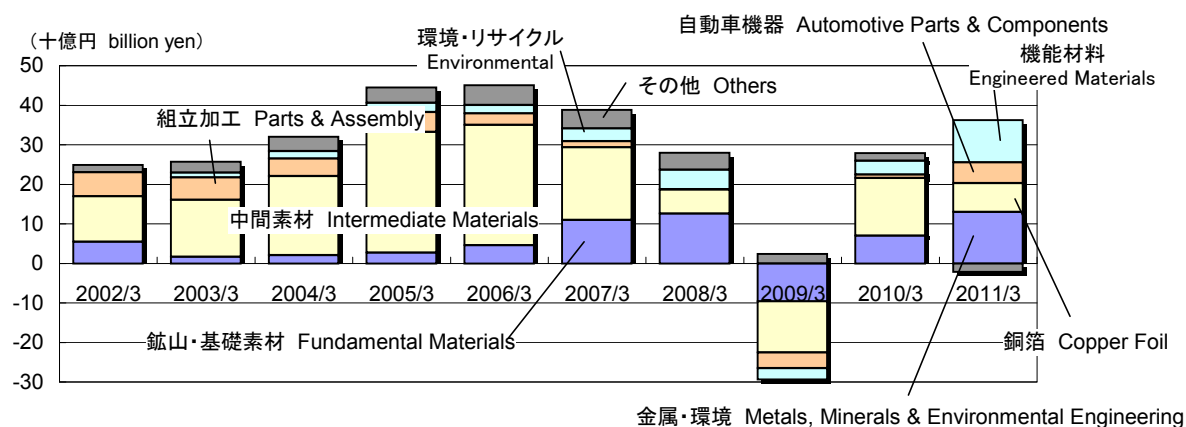
銅箔
Copper Foil
機能材料
Engineered Materials
金属・環境
Metals, Minerals and Environmental Engineering
自動車部品
Automotive Parts & Components
その他
Others

最近10年間の動き（連結） Ten-year Review (Consolidated)

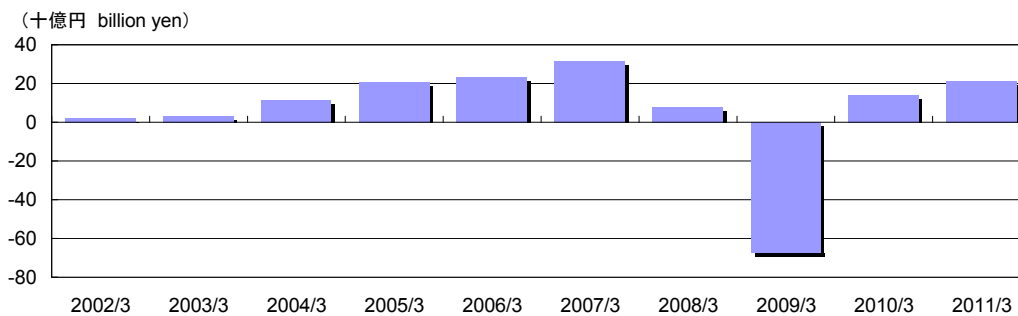
■売上高 Net sales



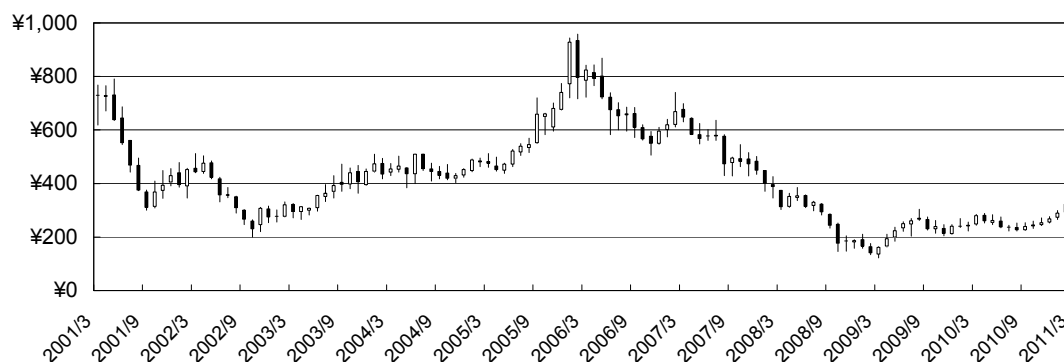
■営業利益 Operating income / 経常利益 (2011/3 以降) Ordinary Income (after 2011/3)



■当期純利益 Net income

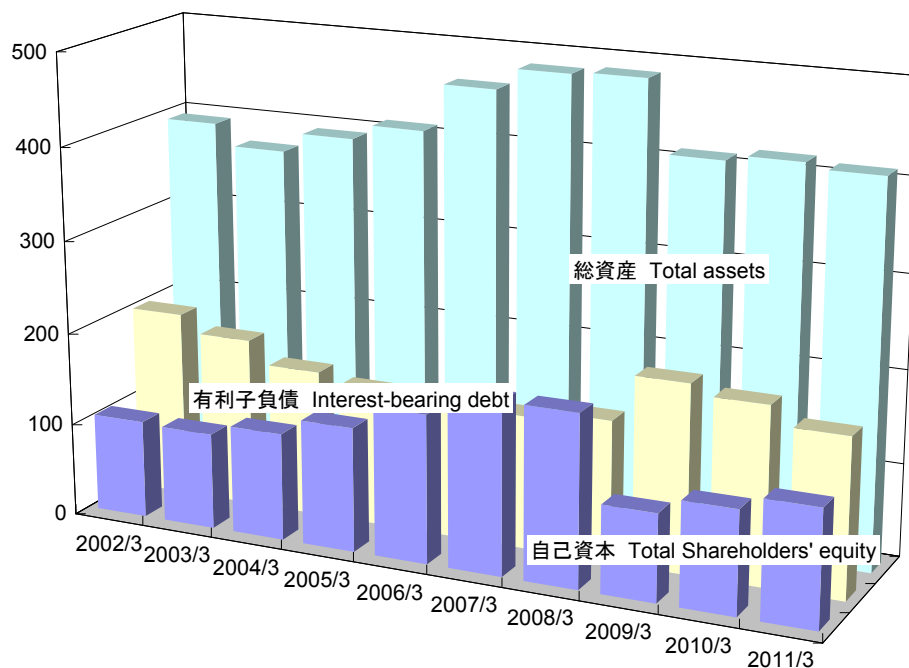


■株価 Stock price per share



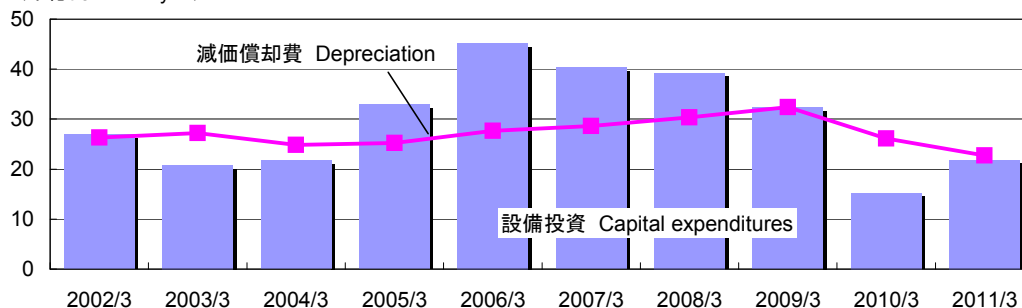
■ 財政状態 *Financial position*

(十億円 billion yen)



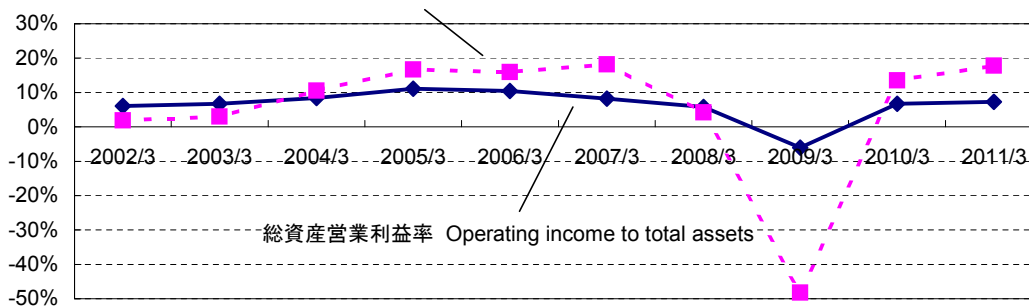
■ 設備投資・減価償却 *Capital expenditures and depreciation*

(十億円 billion yen)



■ 資本効率 *ROA and ROE*

自己資本当期純利益率 Net income to total shareholders' equity



要約財務情報（連結） Financial Summary (Consolidated)

(百万円 Millions of yen)

決算期 for fiscal years ended

2011/3 2010/3 2009/3 2008/3

売上高・損益		Sales and profit/loss			
売上高	Net sales	446,487	392,364	427,191	595,463
営業利益	Operating income	30,208	27,881	(27,031)	27,993
経常利益	Recurring income	34,010	25,639	(30,310)	41,780
当期純利益	Net income	21,160	13,899	(67,256)	7,830
EBITDA	Earnings before interest, taxes, depreciation and amortization	55,170	50,388	(19,801)	53,069
財政状況(期末)		Financial position at fiscal year-end			
総資産	Total assets	411,027	416,541	410,258	486,238
自己資本	Total shareholders' equity	125,947	111,341	94,145	184,995
有利子負債残高	Interest-bearing debt	171,460	191,515	202,468	151,924
D/E レシオ	D/E ratio	1.36	1.72	2.15	0.82
自己資本比率	Shareholders' equity ratio	30.6%	26.7%	22.9%	38.0%
発行済株式総数(千株)	Shares issued (thousand shares)	572,966	572,966	572,966	572,966
自己株式を除く発行済株式数	Outstanding shares excluding treasury stock	571,495	571,507	571,523	572,683
1株当たり情報		Per share data			
1株当たり純資産	Total shareholders' equity	¥194.8	¥194.8	¥164.7	¥323.0
1株当たり当期純利益	Net income	¥24.3	¥24.3	(¥117.6)	¥13.6
潜在株式調整後 1株当たり当期純利益	Net income [diluted]	¥24.3	¥24.3	(¥117.6)	¥13.6
1株当たり配当額	Cash dividends applicable to the year	¥3.0	¥3.0	-	¥12.0
収益性比率		Profitability ratios			
売上高営業利益率	Operating income to net sales	6.8%	7.1%	(6.3%)	4.7%
総資産営業利益率	Operating income to *total assets	7.3%	6.7%	(6.0%)	5.8%
総資産当期純利益率	Net income to *total assets	5.1%	3.4%	(15.0%)	1.6%
株主資本当期純利益率	Net income to *total shareholders' equity	17.8%	13.5%	(48.2%)	4.2%
* Average of beginning and end of fiscal year					
キャッシュフロー		Cash flows			
営業活動によるキャッシュフロー	Net cash from operating activities	22,545	19,610	30,038	41,657
投資活動によるキャッシュフロー	Net cash from investing activities	(26,286)	(17,823)	(36,922)	(38,049)
減価償却費(連結調整勘定を含む)	Depreciation and amortization	22,690	26,023	32,281	27,361
資本的支出	Capital expenditures	21,851	15,186	32,424	39,248
その他		Others			
研究開発費(調査探鉱費を含む)	Research and development expenses	4,942	5,105	8,232	8,616
期末従業員数(人)	Number of employees	9,810	9,851	11,189	11,369

金属価格及び外国為替相場(期中平均) Metal prices and foreign exchange rates (average of fiscal year)

ロンドン金属取引所 亜鉛	LME Zinc (SHG)	(\$/t)	2,187	1,934	1,560	2,986
同上 銅	LME Copper (AG)	(\$/t)	8,140	6,101	5,864	7,584
		(c/lb)	369.2	276.7	266.0	344.0
日本円対米ドル相場(TTM)	JPY rate per US dollar		¥85.8	¥92.9	¥100.7	¥114.3
同上 期末相場	JPY rate at fiscal year-end		¥83.2	¥93.1	¥98.2	¥100.2

株価 Stock price per share

期中最高株価	Highest price of fiscal year	¥333	¥304	¥385	¥646
期中最低株価	Lowest price of fiscal year	¥201	¥163	¥122	¥303
年度末株価	Price at fiscal year-end	¥289	¥280	¥162	¥312

要約財務情報（連結） Financial Summary (Consolidated)

2007/3	2006/3	2005/3	2004/3	2003/3	2002/3	備考 Notes
※（ ）内の数字は負数を表しております						
591,518	503,370	438,143	393,928	378,608	373,442	
38,865	45,052	44,515	32,035	25,740	24,893	
56,585	50,487	45,433	29,702	21,226	18,760	
31,370	23,374	20,780	11,452	3,085	1,986	
77,446	65,738	64,425	42,034	46,189	46,577	
483,397	460,225	409,019	392,545	370,886	393,603	
185,513	159,772	133,963	115,398	103,237	105,219	⇒ 07/3期より純資産合計一少数株主持分としております
143,220	151,834	147,125	158,342	182,530	201,136	Total net assets - Minority interests from FY 07/3
0.77	0.95	1.10	1.37	1.77	1.91	
38.4%	34.7%	32.8%	29.4%	27.8%	26.7%	
572,966	572,966	572,966	572,966	559,305	559,305	
572,713	572,748	572,788	572,847	559,220	559,296	
¥323.9	¥278.6	¥233.6	¥201.3	¥184.4	¥188.1	
¥54.7	¥40.5	¥36.0	¥19.8	¥5.3	¥3.5	
¥54.7	¥40.5	¥36.0	¥18.9	¥5.2	¥3.4	
¥12.0	¥10.0	¥7.0	¥5.0	¥5.0	¥5.0	
6.6%	9.0%	10.2%	8.1%	6.8%	6.7%	
8.2%	10.4%	11.1%	8.4%	6.7%	6.1%	
6.6%	5.4%	5.2%	3.0%	0.8%	0.5%	
18.2%	15.9%	16.7%	10.5%	3.0%	1.9%	
34,077	44,800	44,016	49,787	40,707	28,587	
(30,021)	(43,039)	(25,792)	(14,716)	(21,988)	(18,319)	
25,617	24,686	22,345	21,954	29,636	27,111	
40,309	45,176	32,913	21,773	20,794	26,969	
7,359	6,351	6,502	4,975	4,414	3,208	
10,403	9,965	9,701	9,397	8,339	8,619	
3,579	1,613	1,109	899	777	830	
6,970	4,097	3,000	2,046	1,586	1,527	
316.2	185.8	136.1	92.8	72.0	69.3	
¥117.0	¥113.3	¥107.6	¥113.1	¥122.0	¥125.1	
¥118.1	¥117.5	¥107.3	¥105.7	¥120.2	¥133.3	
¥868	¥958	¥512	¥510	¥503	¥791	
¥506	¥438	¥384	¥265	¥200	¥300	
¥647	¥824	¥475	¥454	¥294	¥443	

連結貸借対照表 Consolidated Balance Sheets

(百万円 Millions of yen)

決算期 as of the ends of

2011/3 2010/3 2009/3 2008/3

資産の部	Assets	2011/3	2010/3	2009/3	2008/3
I 流動資産	I Current assets	185,646	194,834	181,415	227,923
現金及び預金	Cash and time deposits	24,450	42,351	52,915	20,645
受取手形及び売掛金	Notes and accounts receivable	81,176	73,297	47,534	98,149
有価証券	Marketable securities	-	-	-	-
たな卸資産	Inventories	70,965	67,883	63,976	92,719
繰延税金資産	Deferred tax assets	674	1,211	1,138	3,755
その他	Others	9,322	10,963	16,351	13,293
貸倒引当金	Allowance for doubtful accounts	(943)	(872)	(500)	(640)
II 固定資産	II Fixed assets	225,381	221,707	228,842	258,315
(1)有形固定資産	(1) Property, plant and equipment	147,790	157,007	169,299	184,168
建物及び構築物	Buildings and structures, net	48,960	51,624	54,223	61,130
機械装置及び運搬具	Machinery and equipment, net	46,788	55,614	66,488	73,415
土地	Land, net	33,750	33,936	34,280	34,348
リース資産	Lease assets	2,687	2,842	3,575	-
建設仮勘定	Construction in progress	10,629	7,361	5,716	6,604
その他	Others, net	4,974	5,627	5,015	8,669
(2)無形固定資産	(2) Intangible fixed assets	3,519	3,727	3,605	3,014
(3)投資その他の資産	(3) Investments and long-term receivables	74,071	60,972	55,936	71,132
投資有価証券	Investment securities	65,086	48,925	42,852	55,653
長期貸付金	Long-term loans receivable	578	734	779	914
繰延税金資産	Deferred tax assets	3,009	6,064	7,236	8,490
その他	Others	5,723	5,665	5,696	6,262
貸倒引当金	Allowance for doubtful accounts	(327)	(417)	(628)	(188)
為替換算調整勘定	Foreign currency translation adjustments	-	-	-	-
資産合計	Total assets	411,027	416,541	410,258	486,238
負債の部	Liabilities				
I 流動負債	I Current liabilities	136,503	145,565	152,542	154,782
支払手形及び買掛金	Notes and accounts payable	43,532	36,437	26,630	52,436
短期借入金	Short-term bank loans	53,398	59,185	61,325	52,172
コマーシャルペーパー	Commercial paper	-	10,000	20,000	-
社債(一年以内償還)	Current portion of bonds	10,000	10,000	10,000	10,000
転換社債(一年以内償還)	Current portion of convertible bonds	-	-	-	-
リース債務	Lease obligations	929	1,010	1,159	-
未払法人税等	Accrued income taxes	2,872	4,184	1,032	4,652
賞与引当金	Accrued bonuses	4,204	4,079	4,374	5,713
その他	Others	21,566	20,667	28,020	29,807
II 固定負債	II Long-term liabilities	140,071	149,675	153,084	131,911
社債	Bonds	40,000	40,000	40,000	40,000
転換社債	Convertible bonds	-	-	-	-
長期借入金	Long-term loans	68,061	72,329	71,142	49,750
リース債務	Lease obligations	2,005	1,697	2,357	-
繰延税金負債	Deferred tax liabilities	3,081	5,224	4,362	1,777
退職給付(給与)引当金	Allowance for employees' retirement benefits	21,383	23,539	28,655	33,382
環境対策引当金	Allowance for environmental remediation	1,771	2,329	2,577	2,559
負ののれん/連結調整勘定	Consolidation differences	-	-	122	245
その他	Others	3,768	4,554	3,865	4,194
負債合計	Total liabilities	276,575	295,240	305,626	286,693
純資産の部	Net assets				
I 資本金	I Common stock	42,129	42,129	42,129	42,129
II 資本剰余金	II Capital surplus	22,557	22,557	22,557	22,557
III 利益剰余金	III Retained earnings	76,640	57,195	43,659	117,548
IV 自己株式	IV Treasury stock	(510)	(506)	(503)	(131)
V その他有価証券評価差額金	V Net unrealized gains on securities	1,296	2,050	842	2,743
VI 繰延ヘッジ損益	VI Loss on deferred hedge	(827)	16	(4,370)	2,354
VII 為替換算調整勘定	VII Foreign currency translation adjustments	(15,340)	(12,100)	(10,169)	(2,206)
自己資本(旧基準:資本合計)	Total shareholders' equity	125,947	111,341	94,145	184,995
少数株主持分	Minority interests	8,505	9,958	10,485	14,550
純資産合計	Total net assets	134,452	121,300	104,631	199,545
負債、純資産合計	Total liabilities and net assets	411,027	416,541	410,258	486,238

連結貸借対照表 Consolidated Balance Sheets

2007/3	2006/3	2005/3	2004/3	2003/3	2002/3	備考 Notes
						※ ()内の数字は負数を表しております
218,436	208,754	172,912	156,658	147,729	155,238	
17,306	16,944	16,143	12,276	10,356	11,178	
92,828	83,496	76,447	74,122	62,328	69,405	
-	-	-	31	-	52	
88,560	79,165	64,141	49,470	62,591	63,489	
6,486	5,677	5,467	5,197	2,975	2,890	
13,904	23,995	11,191	16,040	10,271	9,143	
(649)	(525)	(478)	(480)	(793)	(921)	
264,960	251,471	236,107	235,887	223,157	238,365	
195,604	203,906	196,298	194,863	188,580	199,364	
68,078	65,880	63,483	67,800	69,760	72,875	
74,687	82,044	73,709	68,898	74,014	80,847	
34,773	38,190	43,148	43,401	36,098	36,381	
-	-	-	-	-	-	
9,295	8,843	7,947	6,716	2,448	2,906	
8,769	8,947	8,009	8,045	6,257	6,353	
2,222	2,194	2,238	2,431	2,062	4,827	
67,133	45,370	37,569	38,592	32,514	34,172	
51,781	32,425	24,404	24,060	17,893	21,162	
954	4,775	3,945	3,661	3,500	3,686	
8,046	5,762	7,507	8,765	9,285	7,836	
6,592	6,291	4,921	5,050	4,912	4,777	
(241)	(3,883)	(3,208)	(2,945)	(3,076)	(3,290)	
-	-	-	-	-	-	⇒ 01/3期以降は資本の部に計上しております Included in the shareholders' equity section from FY 01/3
483,397	460,225	409,019	392,545	370,886	393,603	
160,847	162,170	139,369	147,791	161,405	167,004	
48,064	46,896	36,580	36,402	25,933	27,069	
58,843	63,623	62,235	78,903	90,063	102,832	⇒ 長期借入金の一年内返済分を含んでおります Including current portion of long-term loans
-	-	-	-	5,000	3,000	
1,000	-	50	-	-	5,000	
-	-	-	-	13,371	-	
-	-	-	-	-	-	
8,106	9,221	11,200	3,231	3,533	3,604	
6,067	5,567	5,347	5,129	4,788	4,997	
38,766	36,861	23,956	24,124	18,716	20,499	
124,658	126,558	125,022	118,947	95,547	110,820	
40,000	31,000	21,000	11,050	50	-	
-	-	-	-	-	13,371	
43,376	57,210	63,840	68,388	74,045	76,932	
-	-	-	-	-	-	
1,895	1,326	1,033	1,124	969	2,000	
30,151	28,405	27,688	23,610	17,329	14,767	⇒ 01/3期から会計方針を変更しております
3,074	-	-	-	-	-	
3,217	6,209	8,974	11,573	118	-	
2,942	2,406	2,486	3,200	3,035	3,749	
285,506	288,729	264,392	266,739	256,953	277,824	
						⇒ 07/3期より表示が変更となりました
42,129	42,129	42,129	42,129	42,129	42,129	
22,557	22,557	22,557	22,557	18,570	18,570	
117,181	91,275	72,051	54,302	45,816	45,975	
(116)	(93)	(68)	(41)	(26)	(4)	
5,081	5,914	2,662	2,593	331	415	
(1,160)	-	-	-	-	-	
(160)	(2,011)	(5,369)	(6,143)	(3,584)	(1,867)	
185,513	159,772	133,963	115,398	103,237	105,219	⇒ 指標の連続性のため、旧基準にて表示しております
12,377	11,724	10,662	10,407	10,695	10,559	
197,890	171,496	144,626	125,805	113,932	115,778	
483,397	460,225	409,019	392,545	370,886	393,603	

連結損益計算書 Consolidated Statements of Income

(百万円 Millions of yen)		決算期 for fiscal years ended	2011/3	2010/3	2009/3	2008/3
I	売上高	Net Sales	446,487	392,364	427,191	595,463
II	売上原価	Cost of sales	376,155	325,492	405,253	510,085
	売上総利益	Gross profit	70,332	66,871	21,937	85,378
III	販売費及び一般管理費	Selling, general and administrative expenses	40,123	38,990	48,969	57,384
	営業利益	Operating income	30,208	27,881	(27,031)	27,993
IV	営業外収益	Other income	8,469	3,180	2,316	19,143
	受取利息及び受取配当金	Interest and dividend income	1,690	408	2,050	1,961
	為替差益	Foreign exchange gain	-	-	-	-
	負ののれん/連結調整勘定償却額	Amortization of consolidation differences	16	96	109	2,971
	持分法による投資利益	Equity in earnings of unconsolidated subsidiaries and affiliates	5,561	1,609	(1,277)	11,601
	その他雑収益	Others	1,200	1,066	1,434	2,609
V	営業外費用	Other expenses	4,667	5,422	5,595	5,357
	支払利息	Interest expense	2,709	2,810	3,032	3,053
	有価証券評価損	Write-down of marketable securities	-	-	-	-
	為替差損	Foreign exchange loss	741	565	936	-
	たな卸資産評価損	Write-down of inventories	-	-	-	-
	その他雑費用	Others	1,215	2,046	1,625	2,303
	経常利益	Recurring income	34,010	25,639	(30,310)	41,780
VI	特別利益	Extraordinary income	3,762	2,590	689	4,689
	固定資産売却益	Gain on sale of property, plant and equipment	216	147	457	307
	投資有価証券売却益	Gain on sale of investment securities	-	-	-	274
	連結子会社株式売却益	Gain on sale of shares in consolidated subsidiaries	-	-	-	-
	事業譲渡益	Gain on transfer of business	-	-	-	-
	鉱業権売却益	Gain on sale of mining rights	-	-	-	3,660
	持分変動損益	Gain on change in equity	2,213	-	-	-
	その他特別利益	Others	1,333	2,443	232	446
VII	特別損失	Extraordinary expenses	8,001	6,675	25,493	23,814
	賠償金及び補償金	Indemnity	657	114	154	150
	貸倒損失及び貸倒引当金繰入	Write-off and provision for doubtful accounts	-	-	-	-
	退職給付	Amortization of net transition obligation	-	-	-	-
	会計基準移行時差異償却	for retirement benefits	-	-	-	-
	投資有価証券評価損	Write-down of investment securities	-	912	1,119	17
	固定資産除却損	Loss on disposal of property, plant and equipment	996	720	1,028	1,814
	固定資産売却損	Loss on sale of property, plant and equipment	37	37	65	206
	減損損失・固定資産評価損	Loss on impairment of fixed assets	1,388	674	11,831	18,514
	災害損失	Loss on disaster	3,208	-	-	-
	たな卸資産売却損	Loss on sale of inventories	-	-	-	-
	たな卸資産評価損	Write-down of inventories	-	-	4,728	-
	関係会社整理損	Loss from liquidation of subsidiaries	-	-	-	-
	無償修理等負担金	Cost of warranty and other free repairs	-	-	-	-
	退職給与引当金繰入及び退職給与加算金等	Additional retirement benefits and provision for retirement benefits	-	-	-	-
	連結子会社株式売却損	Loss on sale of securities of consolidated subsidiaries	-	-	-	-
	環境対策費用	Loss from environmental remediation	-	-	-	-
	その他特別損失	Others	1,712	4,217	6,565	3,110
	税金等調整前 当期純利益	Income before income taxes and minority interests	29,771	21,555	(55,114)	22,655
	法人税、住民税及び事業税	Income taxes - current	5,307	3,332	4,853	10,114
	法人税等調整額	Income taxes - deferred	1,917	3,957	7,528	1,927
	少数株主利益	Minority interests	1,385	365	(240)	2,783
	当期純利益	Net income	21,160	13,899	(67,256)	7,830

連結損益計算書 Consolidated Statements of Income

2007/3	2006/3	2005/3	2004/3	2003/3	2002/3	備考 Notes
591,518	503,370	438,143	393,928	378,608	373,442	※ ()内の数字は負数を表しております
500,734	412,003	350,565	319,725	313,416	310,474	
90,784	91,366	87,578	74,202	65,192	62,968	
51,918	46,314	43,062	42,167	39,451	38,075	
38,865	45,052	44,515	32,035	25,740	24,893	
24,028	10,409	6,625	5,758	2,192	1,884	
2,916	648	592	481	444	614	
-	-	-	-	564	-	
2,991	2,963	2,896	2,892	-	-	
14,445	4,468	2,501	933	-	-	
3,675	2,329	635	1,450	1,184	1,270	
6,308	4,974	5,708	8,091	6,706	8,017	
2,696	2,416	2,360	2,945	3,443	4,616	
-	-	-	-	-	-	
-	-	897	264	-	444	
-	-	-	1,063	-	-	
3,611	2,558	2,449	3,818	3,263	2,956	
56,585	50,487	45,433	29,702	21,226	18,760	
12,045	1,231	1,462	2,249	1,289	4,206	
221	162	949	397	330	1,474	
141	898	325	844	312	33	
-	-	-	647	-	2,091	
11,519	-	-	-	-	-	
-	-	-	-	-	-	
-	-	-	-	-	-	
163	169	188	358	647	606	
19,497	13,081	10,981	18,621	13,208	12,177	
320	644	531	554	750	1,379	
-	-	-	-	-	720	
-	-	3,806	3,806	3,803	4,061	
237	626	253	827	2,556	1,218	
3,396	1,659	2,789	2,579	1,856	1,492	
436	234	1,575	212	66	57	
1,334	7,791	-	1,152	1,315	-	
-	-	-	-	-	-	
-	-	-	3,158	-	-	
-	-	-	-	-	-	
6,527	649	-	1,997	-	-	
-	-	-	3,438	-	-	
-	-	-	-	-	1,626	
63	-	-	-	-	-	
3,511	-	-	-	-	-	
3,669	1,476	2,025	894	2,859	1,618	
49,133	38,636	35,914	13,329	9,307	10,789	
14,753	13,397	13,323	5,055	7,791	9,466	
(183)	(227)	815	(3,324)	(2,058)	(1,231)	
3,193	2,092	995	145	489	568	
31,370	23,374	20,780	11,452	3,085	1,986	

連結キャッシュフロー計算書 Consolidated Statements of Cash Flows

(百万円 Millions of yen)

決算期 for fiscal years ended

2011/3

2010/3

2009/3

2008/3

		2011/3	2010/3	2009/3	2008/3
I 営業活動によるキャッシュフロー	Cash flows from operating activities				
税金等調整前当期純利益	Income before income taxes and minority interests	29,771	21,555	(55,114)	22,655
減価償却費(連結調整勘定を含む)	Depreciation and amortization	22,690	26,023	32,281	27,361
減損損失・固定資産評価損	Loss on impairment of fixed assets	1,388	674	11,831	18,514
退職給付	Amortization of net transition obligation	-	-	-	-
会計基準移行時差異償却	for retirement benefits	-	-	-	-
事業譲渡益	Gain on transfer of business	-	-	-	-
災害による損失	Loss on Disaster	3,208	-	-	-
環境対策費用引当金繰入	Loss on provision for environmental remediation	695	394	977	156
為替差損益	Foreign exchange loss(gain)	63	(110)	99	59
持分法による投資損益	Equity in loss(earnings) of unconsolidated subsidiaries and affiliates	(5,561)	(1,609)	1,277	(11,601)
支払利息	Interest expense	2,709	2,810	3,032	3,053
売上債権の増減額	Decrease(increase) in notes and accounts receivable	(18,380)	(25,188)	46,114	(6,210)
たな卸資産の増減額	Decrease(increase) in inventories	(11,623)	(3,519)	25,384	(4,479)
仕入債務の増減額	Increase(decrease) in notes and accounts payable	9,136	9,463	(22,706)	1,128
その他	Others	(4,079)	(7,819)	(7,394)	1,173
小計	Subtotal	30,020	22,673	35,784	51,811
利息及び配当金の受取額	Interest and dividends received	3,154	726	5,504	6,477
利息の支払額	Interest paid	(2,764)	(2,788)	(2,900)	(2,946)
保証債務の履行による支払額	Payment for execution of a guarantee	-	-	-	-
賠償金及び補償金の支払額	Indemnity paid	(657)	(114)	(154)	(150)
合理化退職金の支出	Payment for retirement benefit for rationalization	-	(2,253)	-	-
法人税等の支払額	Income taxes paid	(7,816)	(3,215)	(8,191)	(13,533)
法人税等の還付額	Income taxes refunded	611	4,605	-	-
その他	Others	(1)	(22)	(3)	-
営業活動によるキャッシュフロー	Net cash provided by operating activities	22,545	19,610	30,038	41,657
II 投資活動によるキャッシュフロー	Cash flows from investing activities				
有価証券の取得による支出	Purchase of securities	(4,341)	(2,977)	(2,389)	(1,760)
有価証券の売却による収入	Sale of securities	-	-	102	372
連結子会社株式の売却による収入(支出)	Sale of shares in consolidated subsidiaries	-	-	-	-
有形固定資産の取得による支出	Acquisition of property, plant and equipment	(19,717)	(13,469)	(33,821)	(39,510)
有形固定資産の売却による収入	Sale of property, plant and equipment	278	730	449	1,640
鉱業権売却による収入	Proceeds from sale of mining rights	-	392	502	3,936
長期貸付金の貸付による支出	Disbursement for long-term loans receivable	(11)	(110)	(9)	(462)
長期貸付金の回収による収入	Collection of long-term loans receivable	167	155	143	159
事業譲渡による収入	Proceeds from transfer of business	-	-	-	-
その他	Others	(2,661)	(2,544)	(1,900)	(2,425)
投資活動によるキャッシュフロー	Net cash used in investing activities	(26,286)	(17,823)	(36,922)	(38,049)
III 財務活動によるキャッシュフロー	Cash flows from financing activities				
短期借入金の増減額	Net increase(decrease) in short-term bank loans	6,565	(8,214)	10,340	4,751
コマーシャルペーパーの増減額	Net increase(decrease) in commercial paper	(10,000)	(10,000)	20,000	-
長期借入による収入	Proceeds from long-term debt	8,397	17,046	32,594	17,414
長期借入金の返済による支出	Repayment of long-term debt	(15,131)	(10,787)	(10,301)	(23,543)
社債及び転換社債の発行による収入	Issuance of bonds and convertible bonds	10,000	10,000	10,000	10,000
社債及び転換社債の償還による支出	Redemption of bonds and convertible bonds	(10,000)	(10,000)	(10,000)	(1,000)
配当金の支払額	Payment for cash dividends to shareholders	(1,714)	-	(6,872)	(6,872)
少数株主への配当金支払額	Payment for cash dividends to minority interests	(1,394)	(111)	(1,324)	(1,344)
その他	Others	(292)	(1,121)	(2,068)	(150)
財務活動によるキャッシュフロー	Net cash used in financing activities	(13,569)	(13,188)	42,367	(744)
IV 現金及び現金同等物に係る換算差額	Effect of exchange rate changes on cash and cash equivalents	(579)	560	(3,213)	149
V 現金及び現金同等物の増減額	Net increase(decrease) in cash and cash equivalents	(17,890)	(10,840)	32,270	3,012
VI 現金及び現金同等物の期首残高	Cash and cash equivalents at beginning of year	42,348	52,915	20,645	17,304
VII 新規連結子会社の現金及び現金同等物の期首残高	Effect of additions of consolidated subsidiaries	-	280	-	328
VIII 連結除外に伴う現金及び現金同等物の減少額	Effect of exclusions of consolidated subsidiaries	(13)	(5)	-	-
IX 現金及び現金同等物の期末残高	Cash and cash equivalents at end of year	24,445	42,348	52,915	20,645

連結キャッシュフロー計算書 Consolidated Statements of Cash Flows

2007/3	2006/3	2005/3	2004/3	2003/3	2002/3	備考 Notes
※ ()内の数字は負数を表しております						
49,133	38,636	35,914	13,329	9,307	10,789	
25,617	24,686	22,345	21,954	29,636	27,111	
1,334	7,791	-	1,152	1,315	-	
-	-	3,806	3,806	3,803	4,061	
(11,519)	-	-	-	-	-	
-	-	-	-	-	-	
3,074	-	-	-	-	-	
(159)	(39)	(144)	155	(325)	465	
(14,445)	(4,468)	(2,501)	(933)	77	31	
2,696	2,416	2,360	2,945	3,443	4,616	
(11,221)	(5,345)	(2,284)	(3,987)	6,898	17,191	
(13,508)	(13,751)	(14,376)	15,337	640	(4,176)	
2,460	9,567	19	3,956	(1,452)	(9,493)	
12,137	915	5,748	320	(1,041)	(566)	
45,600	60,409	50,887	58,036	52,303	50,030	
7,143	2,700	1,251	597	553	666	
(2,712)	(2,389)	(2,517)	(2,923)	(3,489)	(4,776)	
-	-	-	-	-	-	
(320)	(644)	(531)	(554)	(750)	(1,379)	
-	-	-	-	-	(1,221)	
(15,634)	(15,275)	(5,074)	(5,368)	(7,910)	(14,731)	
-	-	-	-	-	-	
-	-	-	-	-	-	
34,077	44,800	44,016	49,787	40,707	28,587	
(13,717)	(2,165)	(236)	(2,240)	(2,710)	(657)	
242	1,571	461	3,011	1,139	560	
231	285	-	885	(43)	5,333	
(38,900)	(41,461)	(32,528)	(21,263)	(20,344)	(26,604)	
2,046	2,402	6,495	1,261	1,285	2,779	
-	-	-	-	-	-	
(863)	(1,247)	(129)	(207)	(25)	(122)	
167	3	107	106	138	295	
22,337	-	-	-	-	-	
(1,565)	(2,428)	37	3,730	(1,427)	96	
(30,021)	(43,039)	(25,792)	(14,716)	(21,988)	(18,319)	
(6,915)	(2,285)	(14,492)	(10,950)	(12,566)	(2,347)	
-	-	-	(5,000)	2,000	1,000	
16,393	12,511	13,207	20,818	21,808	19,067	
(17,569)	(16,920)	(20,289)	(31,486)	(23,484)	(29,996)	
10,000	10,000	10,000	10,000	-	-	
-	(50)	-	(13,371)	(5,000)	-	
(5,727)	(4,009)	(2,864)	(2,870)	(2,796)	(3,355)	
(838)	(417)	(403)	(125)	(132)	(248)	
(87)	(107)	(105)	(3)	18	33	
(4,744)	(1,278)	(14,947)	(32,989)	(20,152)	(15,846)	
529	319	115	(119)	(250)	117	
(159)	801	3,391	1,962	(1,684)	(5,461)	
16,944	16,143	12,274	10,312	11,230	16,692	
520	-	476	-	766	-	
-	-	-	-	-	-	
17,304	16,944	16,143	12,274	10,312	11,230	

事業別セグメント情報 Business Segment Information

(百万円 Millions of yen)

決算期 for fiscal years ended

2011/3

2010/3

売上高	Sales (including intergroup sales)		
銅箔	Copper Foil	60,000	45,636
機能材料	Engineered Materials	84,173	62,616
金属・環境	Metals, Minarals & Environmental Engineering	167,969	149,966
自動車機器	Automotive Parts & Components	91,216	78,257
その他	Other	124,182	123,601
消去または全社	Elimination	(81,054)	(67,716)
連結	Consolidated	446,487	392,364

売上高
鈦山・基礎素材
中間素材
組立加工
環境・リサイクル
エンジニアリング・サービス等
消去または全社
連結

経常利益	Ordinary income		
銅箔	Copper Foil	7,299	5,871
機能材料	Engineered Materials	10,675	7,141
金属・環境	Metals, Minarals & Environmental Engineering	12,967	12,537
自動車機器	Automotive Parts & Components	5,286	(275)
その他	Other	3,250	5,581
消去または全社	Elimination	(5,468)	(5,218)
連結	Consolidated	34,010	25,639

営業利益
鈦山・基礎素材
中間素材
組立加工
環境・リサイクル
エンジニアリング・サービス等
消去または全社
連結

売上高経常利益率	Ordinary income to net sales		
銅箔	Copper Foil	12.2%	12.9%
機能材料	Engineered Materials	12.7%	11.4%
金属・環境	Metals, Minarals & Environmental Engineering	7.7%	8.4%
自動車機器	Automotive Parts & Components	5.8%	(0.4%)
その他	Other	2.6%	4.5%
連結	Consolidated	7.6%	6.5%

売上高営業利益率
鈦山・基礎素材
中間素材
組立加工
環境・リサイクル
エンジニアリング・サービス等
消去または全社
連結

資産(期末)	Allocated assets at fiscal year-end		
銅箔	Copper Foil	51,172	44,720
機能材料	Engineered Materials	68,350	55,596
金属・環境	Metals, Minarals & Environmental Engineering	148,207	143,814
自動車機器	Automotive Parts & Components	40,990	44,683
その他	Other	86,564	90,219
消去または全社	Elimination	15,742	37,506
連結	Consolidated	411,027	416,541

資産(期末)
鈦山・基礎素材
中間素材
組立加工
環境・リサイクル
エンジニアリング・サービス等
消去または全社
連結

投下資本経常利益率	Ratio of ordinary income to *allocated assets		
	(* average of beginning and end of fiscal year)		
銅箔	Copper Foil	15.2%	
機能材料	Engineered Materials	17.2%	
金属・環境	Metals, Minarals & Environmental Engineering	8.9%	
自動車機器	Automotive Parts & Components	12.3%	
その他	Other	3.7%	
連結	Consolidated	8.2%	

投下資本営業利益率
鈦山・基礎素材
中間素材
組立加工
環境・リサイクル
エンジニアリング・サービス等
消去または全社
連結

減価償却費	Depreciation		
銅箔	Copper Foil	3,182	3,491
機能材料	Engineered Materials	3,303	3,682
金属・環境	Metals, Minarals & Environmental Engineering	8,581	9,239
自動車機器	Automotive Parts & Components	3,445	3,657
その他	Other	2,869	4,104
消去または全社	Elimination	1,322	1,942
連結	Consolidated	22,707	26,119

減価償却費
鈦山・基礎素材
中間素材
組立加工
環境・リサイクル
エンジニアリング・サービス等
消去または全社
連結

資本的支出	Capital expenditures		
銅箔	Copper Foil	4,911	3,907
機能材料	Engineered Materials	3,738	1,214
金属・環境	Metals, Minarals & Environmental Engineering	5,846	4,831
自動車機器	Automotive Parts & Components	3,152	2,740
その他	Other	3,068	1,778
消去または全社	Elimination	1,133	712
連結	Consolidated	21,851	15,186

資本的支出
鈦山・基礎素材
中間素材
組立加工
環境・リサイクル
エンジニアリング・サービス等
消去または全社
連結

事業別セグメント情報 Business Segment Information

	2010/3	2009/3	2008/3	2007/3	2006/3	2005/3	2004/3	2003/3	2002/3
Sales (including intergroup sales)									
Mining & Fundamental Materials	99,061	93,532	142,120	113,564	93,750	78,077	77,442	116,453	134,294
Intermediate Materials	153,937	174,847	243,772	249,287	208,347	176,008	143,179	142,193	135,252
Parts Manufacturing and Assembly	104,526	119,535	153,821	161,756	159,311	145,657	136,007	85,455	86,664
Environmental Engineering & Metals Recycling	50,800	51,323	69,092	53,350	38,843	31,574	26,922	22,247	
Engineering & Services	60,418	70,329	88,274	108,043	87,338	66,595	55,263	52,687	58,943
Elimination	(76,379)	(82,377)	(101,618)	(94,485)	(84,221)	(59,770)	(44,889)	(40,428)	(41,712)
Consolidated	392,364	427,191	595,463	591,518	503,370	438,143	393,928	378,608	373,442
Operating income									
Mining & Fundamental Materials	7,036	(9,619)	12,582	10,998	4,549	2,677	2,032	1,638	5,449
Intermediate Materials	14,525	(12,906)	6,090	18,336	30,470	30,583	20,030	14,443	11,495
Parts Manufacturing and Assembly	901	(4,019)	73	1,585	2,883	4,981	4,440	5,700	6,054
Environmental Engineering & Metals Recycling	3,466	(2,910)	4,939	3,202	2,170	2,378	1,896	1,176	
Engineering & Services	1,682	2,204	3,232	4,533	4,429	3,173	2,752	1,876	1,582
Elimination	(268)	219	1,073	209	547	721	883	904	310
Consolidated	27,881	(27,031)	27,993	38,865	45,052	44,515	32,035	25,740	24,893
Operating income to net sales									
Mining & Fundamental Materials	7.1%	(10.3%)	8.9%	9.7%	4.9%	3.4%	2.6%	1.4%	4.1%
Intermediate Materials	9.4%	(7.4%)	2.5%	7.4%	14.6%	17.4%	14.0%	10.2%	8.5%
Parts Manufacturing and Assembly	0.9%	(3.4%)	0.0%	1.0%	1.8%	3.4%	3.3%	6.7%	7.0%
Environmental Engineering & Metals Recycling	6.8%	(5.7%)	7.1%	6.0%	5.6%	7.5%	7.0%	5.3%	
Engineering & Services	2.8%	3.1%	3.7%	4.2%	5.1%	4.8%	5.0%	3.6%	2.7%
Consolidated	7.1%	(6.3%)	4.7%	6.6%	9.0%	10.2%	8.1%	6.8%	6.7%
Allocated assets at fiscal year-end									
Mining & Fundamental Materials	122,303	113,023	139,698	115,923	118,551	105,980	98,703	118,853	149,415
Intermediate Materials	133,519	128,575	180,762	206,043	179,752	152,626	146,832	155,531	168,371
Parts Manufacturing and Assembly	93,100	99,349	111,518	105,497	109,876	102,591	100,172	53,562	56,433
Environmental Engineering & Metals Recycling	39,072	39,402	41,199	39,447	32,336	30,288	27,822	20,211	
Engineering & Services	58,691	58,196	47,282	57,670	60,842	49,316	52,183	49,602	54,742
Elimination	(30,146)	(28,288)	(34,224)	(41,185)	(41,134)	(31,784)	(33,169)	(26,875)	(35,360)
Consolidated	416,541	410,258	486,238	483,397	460,225	409,019	392,545	370,886	393,603
Ratio of operating income to *allocated assets									
Mining & Fundamental Materials	6.0%	(7.6%)	9.8%	9.4%	4.1%	2.6%	1.9%	1.4%	3.6%
Intermediate Materials	11.1%	(8.3%)	3.1%	9.5%	18.3%	20.4%	13.2%	8.9%	6.4%
Parts Manufacturing and Assembly	0.9%	(3.8%)	0.1%	1.5%	2.7%	4.9%	5.8%	10.6%	10.0%
Environmental Engineering & Metals Recycling	8.8%	(7.2%)	12.2%	8.9%	6.9%	8.2%	7.9%	5.8%	
Engineering & Services	2.9%	4.2%	6.2%	7.6%	8.0%	6.3%	5.4%	3.6%	2.9%
Consolidated	6.7%	(6.0%)	5.8%	8.2%	10.4%	11.1%	8.4%	6.7%	6.1%
Depreciation									
Mining & Fundamental Materials	7,429	8,064	6,068	4,566	6,117	5,952	6,110	8,038	8,465
Intermediate Materials	9,603	14,388	17,095	16,878	15,113	13,161	12,472	14,915	13,753
Parts Manufacturing and Assembly	6,077	6,902	6,113	5,535	4,817	4,537	4,731	2,871	3,325
Environmental Engineering & Metals Recycling	2,741	2,760	1,844	1,456	1,341	1,223	1,097	885	
Engineering & Services	395	419	372	457	468	590	674	746	808
Elimination	(127)	(145)	(1,161)	(286)	(209)	(222)	(240)	(250)	(70)
Consolidated	26,119	32,390	30,333	28,608	27,650	25,242	24,846	27,207	26,283
Capital expenditures									
Mining & Fundamental Materials	3,704	5,814	10,216	7,664	9,613	7,523	4,899	4,855	7,840
Intermediate Materials	6,543	15,568	18,771	25,141	27,170	17,236	10,009	11,278	16,365
Parts Manufacturing and Assembly	3,576	7,609	6,834	5,418	6,978	5,936	4,841	3,546	2,977
Environmental Engineering & Metals Recycling	1,311	3,400	3,323	2,427	2,092	2,054	1,755	953	
Engineering & Services	95	181	107	416	287	284	267	258	293
Elimination	(46)	(149)	(5)	(759)	(966)	(121)	-	(99)	(508)
Consolidated	15,186	32,424	39,248	40,309	45,176	32,913	21,773	20,794	26,969

設立以来の業績推移 Performance since Establishment

(百万円 Millions of yen)

決算期 Fiscal year ended March	売上高 Net sales	営業利益 Operating income	経常利益 Recurring income	当期純利益 Net income	総資産 Total assets	自己資本 Shareholders' equity	1株配当 Dividends per share	
2011/3	446,487	30,208	34,010	21,160	411,027	125,947	¥6.0	
2010/3	392,364	27,881	25,639	13,899	416,541	111,341	¥3.0	
2009/3	427,191	(27,031)	(30,310)	(67,256)	410,258	94,145	-	
2008/3	595,463	27,993	41,780	7,830	486,238	184,995	¥12.0	
2007/3	591,518	38,865	56,585	31,370	483,397	185,513	¥12.0	
2006/3	503,370	45,052	50,487	23,374	460,225	159,772	¥10.0	
2005/3	438,143	44,515	45,433	20,780	409,019	133,963	¥7.0	
2004/3	393,928	32,035	29,702	11,452	392,545	115,398	¥5.0	
2003/3	378,608	25,740	21,226	3,085	370,886	103,237	¥5.0	
2002/3	373,442	24,893	18,760	1,986	393,603	105,219	¥5.0	
2001/3	423,707	46,752	38,113	17,012	424,829	105,936	¥6.0	
2000/3	394,722	35,474	27,847	14,181	412,103	83,489	¥6.0	
1999/3	400,399	35,295	24,786	12,344	433,647	55,269	¥5.0	
1998/3	426,724	37,498	22,056	9,581	456,963	46,091	¥5.0	
1997/3	400,349	28,482	16,208	5,414	462,313	38,838	¥4.0	
1996/3	370,433	23,632	9,747	7,606	458,449	35,018	¥3.0	
1995/3	342,311	12,652	562	(9,125)	454,257	19,313	-	
1994/3	317,127	9,010	(4,004)	(5,173)	448,208	29,768	-	
1993/3	336,521	10,283	(2,455)	(4,281)	436,681	33,791	¥4.0	
1992/3	454,785	18,652	5,161	4,757	434,552	43,907	¥4.0	
1991/3	511,005	29,458	12,762	6,423	440,244	41,834	¥4.0	
1990/3	405,902	30,830	17,978	10,725	398,420	38,307	¥4.0	
1989/3	314,667	24,653	15,038	5,723	365,853	24,031	-	
1988/3	315,931	13,706	5,185	4,260	351,131	16,889	-	
1987/3	289,690	8,493	(645)	(9,803)	305,482	12,351	-	
1986/3	310,053	10,900	(304)	(3,200)	310,672	20,252	-	
1985/3	313,451	21,228	7,752	5,142	309,563	23,510	-	
1984/3	311,427	17,122	4,014	2,274	284,450	17,430	-	
1983/3	284,250	13,942	(2,319)	(275)	294,712	18,980	-	
1982/3	286,229	14,542	(4,604)	(4,936)	305,435	18,892	-	
1981/3	302,748	14,013	(2,966)	(373)	294,677	23,822	-	連結 Consolidated
1980/3	310,426	21,772	7,886	4,466	312,745	23,495	-	↑
1979/3	200,059	1,151	(7,184)	(6,363)	274,557	19,051	-	
1978/3	209,157	4,515	(8,063)	(6,054)	266,671	25,431	-	
<hr/>								↓
1978/3	188,239	1,379	(8,217)	(4,593)	232,201	27,718	-	
1977/3	204,423	12,323	1,562	1,738	251,801	34,285	¥4.0	
1976/3	166,444	10,312	930	2,640	248,172	35,012	¥5.0	
1975/3	204,390	13,585	6,900	2,337	205,114	33,271	¥5.0	
1974/3	202,691	19,887	8,534	1,915	199,891	24,403	¥2.5	
1973/3	129,349	5,964	899	(507)	148,684	22,488	-	
1972/3	114,496	3,967	545	545	145,969	23,652	¥4.5	
1971/3	116,880	3,625	1,125	1,834	132,670	24,641	¥5.5	
1970/3	118,582	7,344	3,671	1,828	120,525	19,164	¥5.0	
1969/3	89,690	3,693	1,360	844	99,322	18,438	¥5.0	
1968/3	76,983	3,365	1,766	1,365	91,102	18,689	¥5.0	
1967/3	69,912	4,272	N/A	1,471	69,083	18,423	¥5.0	
1966/3	57,201	4,269	N/A	1,204	64,755	18,051	¥5.0	
1965/3	50,101	3,236	N/A	1,293	57,569	17,820	¥5.0	
1964/3	41,344	2,877	N/A	843	50,402	14,021	¥5.0	
1963/3	33,495	1,758	N/A	816	45,738	13,908	¥5.5	
1962/3	33,012	2,397	N/A	922	38,075	11,471	¥6.0	
1961/3	28,952	2,519	N/A	865	33,091	11,139	¥6.0	
1960/3	25,935	2,567	N/A	922	27,532	10,935	¥7.5	
1959/3	21,428	2,039	N/A	832	26,095	10,747	¥7.5	
1958/3	20,702	2,483	N/A	735	21,989	8,042	¥9.0	
1957/3	22,334	2,770	N/A	820	18,730	7,756	¥9.0	
1956/3	18,613	2,137	N/A	707	17,928	7,384	¥9.0	
1955/3	16,969	2,157	N/A	675	17,415	7,126	¥12.5	
1954/3	17,478	2,429	N/A	778	15,894	5,869	¥15.0	
1953/3	15,010	1,718	N/A	858	13,985	5,505	¥15.0	
1952/3	18,805	3,601	N/A	1,293	12,237	5,071	¥20.0	
1951/3	11,075	2,112	N/A	1,004	6,757	2,788	¥18.75	
設立時 as of establishment in May 1950					2,809	600		単独 Non-consolidated

注) 63/3期以前につき現行基準に合わせるため貸倒引当金・税金引当金の組替えを行っております。
 Note: Some adjustments have been made for FY 63/3 and before regarding doubtful loan reserve and tax reserve in order to maintain consistency with current accounting standards.

■取締役 Board of Directors

代表取締役社長 <i>President</i> <i>Representative Director</i>	仙田 貞雄 <i>SENDA, Sadao</i>	CEO(最高経営責任者)、COO(最高業務執行責任者) <i>Chief Executive Officer</i> <i>Chief Operating Officer</i>
代表取締役 <i>Representative Director</i>	蓮尾 充彦 <i>HASUO, Mitsuhiro</i>	専務執行役員 <i>Senior Managing Executive Officer</i>
	樋口 修 <i>HIGUCHI, Osamu</i>	専務執行役員、CRO(最高危機管理責任者) <i>Senior Managing Executive Officer</i> <i>Chief Risk Management Officer</i>
取締役 <i>Directors</i>	上川 満 <i>UEKAWA, Mitsuru</i>	常務執行役員 <i>Senior Executive Officer</i>
	坂井 治文 <i>SAKAI, Harufumi</i>	常務執行役員 <i>Senior Executive Officer</i>
	森田 正久 <i>MORITA, Masashisa</i>	常務執行役員 <i>Senior Executive Officer</i>
	佐藤 敬 <i>SATO, Takashi</i>	常務執行役員 <i>Senior Executive Officer</i>
	西田 計治 <i>NISHIDA, Keiji</i>	常務執行役員、CFO(最高財務責任者) <i>Senior Executive Officer</i> <i>Chief Financial Officer</i>
社外取締役 <i>Outside Director</i>	柴田 裕通 <i>SHIBATA, Hiromichi</i>	

■監査役 Corporate Auditors

常勤監査役 <i>Standing Auditors</i>	高井 龍彦 <i>TAKAI, Tatsuhiko</i>	小佐野 明 <i>OSANO, Akira</i>
社外監査役 <i>Outside Auditors</i>	佐藤 順哉 <i>SATO, Junya</i>	若杉 隆平 <i>WAKASUGI, Ryuhei</i>

■上席執行役員 Senior Executive Officer

久岡 一史
HISAOKA, Isshi

■執行役員 Executive Officers

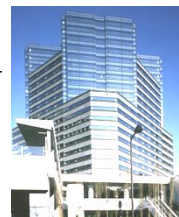
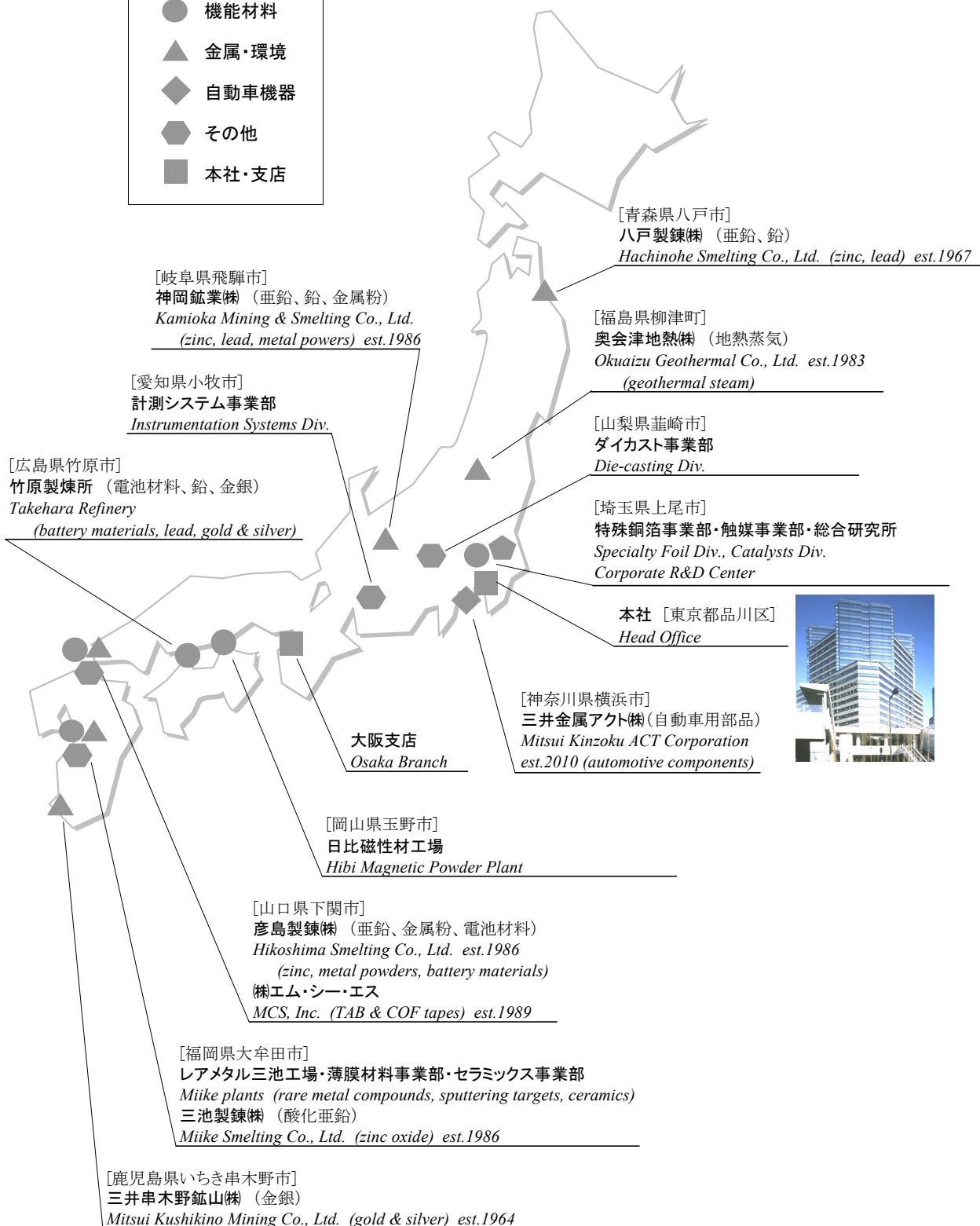
名井 肇 <i>MYOI, Hajime</i>	渡辺 浩介 <i>WATANABE, Kosuke</i>	原川 誠一 <i>HARAKAWA, Seiichi</i>	佐藤 幹二 <i>SATO, kanji</i>
小谷田 雅行 <i>KOYATA, Masayuki</i>	森 俊樹 <i>MORI, Toshiki</i>	町田 稔 <i>MACHIDA, Minoru</i>	吾妻 伸一 <i>AZUMA, Shinichi</i>
吉田 亮 <i>YOSHIDA, Akira</i>	五味 篤 <i>GOMI, Atsushi</i>	城野 裕隆 <i>JONO, Hirotaka</i>	築城 修治 <i>CHIKUJO, Shuji</i>
吉丸 克彦 <i>YOSHIMARU, Katsuhiko</i>	真鍋 貴志 <i>MANABE, Takashi</i>		

主要事業所・関係会社 Major Plants and Offices

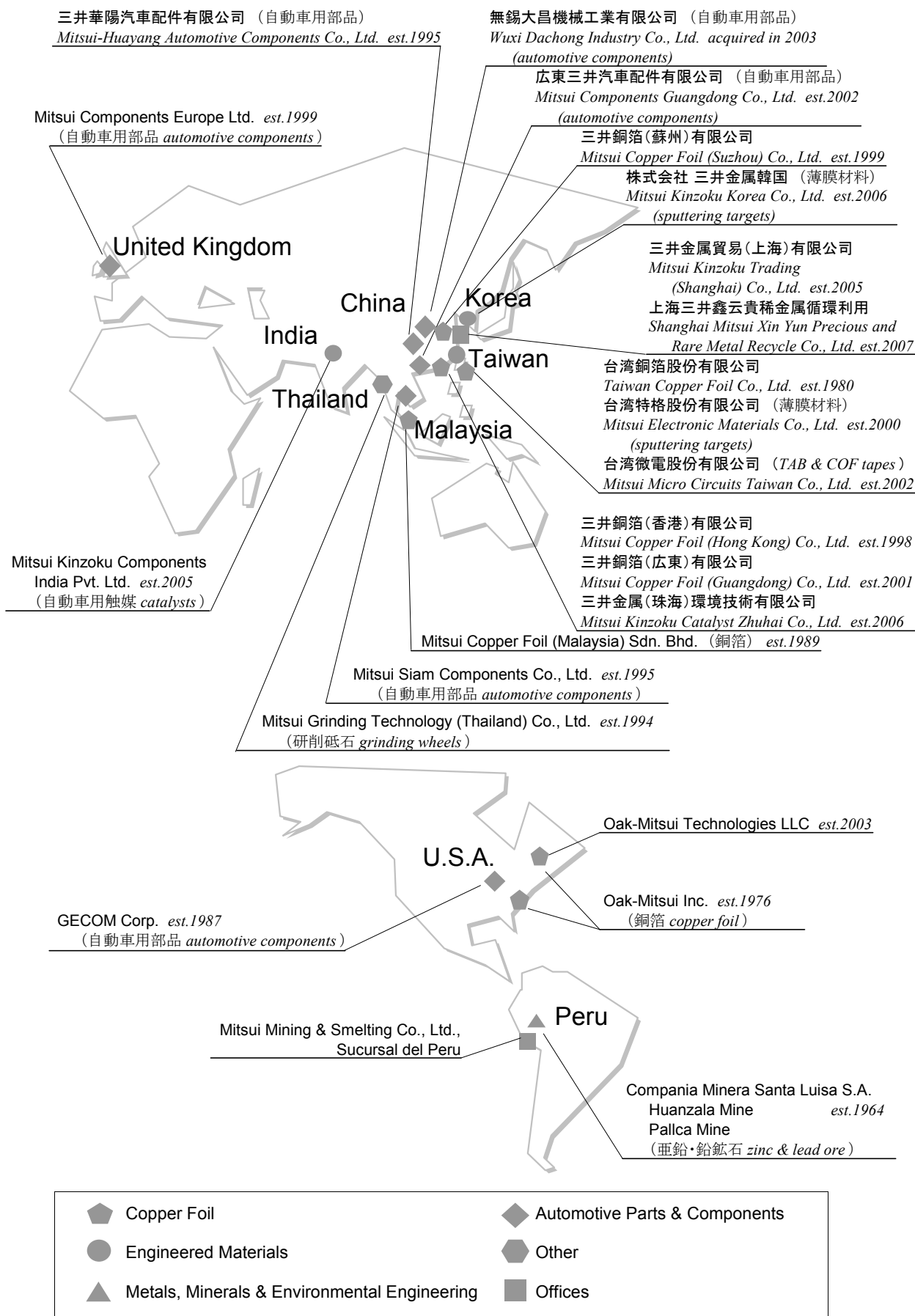
《国内 Japan》

※西暦年号は会社設立年(または取得年)

- 銅箔
- 機能材料
- ▲ 金属・環境
- ◆ 自動車機器
- その他
- 本社・支店



《海外 Overseas》



■前史

Prehistory

養老年間 神岡地域で初めて銅山が開坑されたといわれる

It is said that a copper mine was developed in the Kamioka area in the early eighth century.

明治7年 三井組が神岡で鉱山経営を開始

In 1874, the Mitsui Clan began mining operations in Kamioka.

明治44年 三井鉱山株式会社設立

In 1911, Mitsui Mining Co., Ltd. was established

昭和25年 三井鉱山株式会社の金属部門が神岡鉱業株式会社として分離（昭和27年に三井金属鉱業株式会社と改称）

In 1950, the metals division of Mitsui Mining Co. was separated as Kamioka Mining & Smelting Co., Ltd.

(renamed Mitsui Mining & Smelting Co., Ltd. in 1952)

■設立

Established

昭和25年5月1日

May 1, 1950

■資本金

Paid-in capital

42,129百万円

JPY 42,129 million

■従業員数(連結)

Number of employees

9,810名

■発行済株式総数

Total number of shares issued

572,966,166株

■上場取引所

Stock listings

東京証券取引所

Tokyo stock exchange

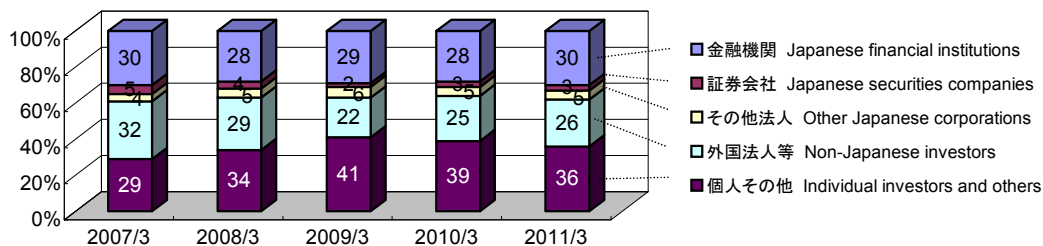
■株主数

Number of shareholders

58,520名

■株主構成

Distribution of shareholders



■主要株主

Principal shareholders

	持株比率 Percentage of shares held
日本トラスティ・サービス信託銀行株式会社(信託口) <i>Japan Trustee Services Bank, Ltd. (Held in trust account)</i>	6.20%
日本トラスティ・サービス信託銀行株式会社(信託口9) <i>Japan Trustee Services Bank, Ltd. (Held in trust account 9)</i>	4.72%
日本マスタートラスト信託銀行株式会社(信託口) <i>The Master Trust Bank of Japan, Ltd. (Held in trust account)</i>	4.26%
全国共済農業協同組合連合会 <i>National Mutual Insurance Federation Of Agricultural Cooperatives</i>	2.50%
オーディー 05 オムニバス アカウント トリーティ クライアント <i>SSBT OD05 OMNIBUS ACCOUNT CHINA TREATY CLIENTS</i>	2.37%
三井金属社員持株会 <i>The Employees' Shareholding Association</i>	1.60%
ステート ストリート バンク ウェスト クライアント トリーティ <i>State Street Bank West Client Treaty</i>	1.37%
アイリスオーヤマ株式会社 <i>IRISOHYAMA INC.</i>	1.27%
シティバンク ロンドン F117 <i>Citibank London-F117</i>	1.21%
三井生命保険株式会社 <i>Mitsui Life Insurance Company, Limited</i>	1.04%

お問合せ先

三井金属鉱業株式会社 総務部広報室

〒141-8584 東京都品川区大崎一丁目11番1号

電話 03-5437-8028 ファックス 03-5437-8029

電子メール PR@mitsui-kinzoku.co.jp

ホームページ <http://www.mitsui-kinzoku.co.jp/>

Contact :

Investor & Public Relations

MITSUI MINING & SMELTING CO., LTD.

1-11-1 Osaki, Shinagawa-ku, Tokyo 141-8584 Japan

Phone 81-3-5437-8028 Facsimile 81-3-5437-8029

E-mail PR@mitsui-kinzoku.co.jp

URL <http://www.mitsui-kinzoku.co.jp/>